

# High Value Added

## Media changer

Up to three media rolls can be set on the feeding side, saving space and work.

Loadable three of your commonly-use media into the Media changer and turn the handle to switch the media easily. It is usable safely and efficiently.



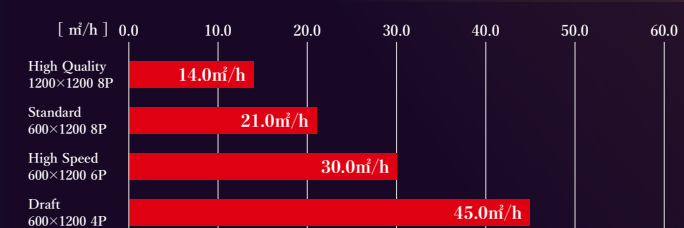
## XY slitter

Improves post-processing efficiency and supports labor-saving and work-saving!

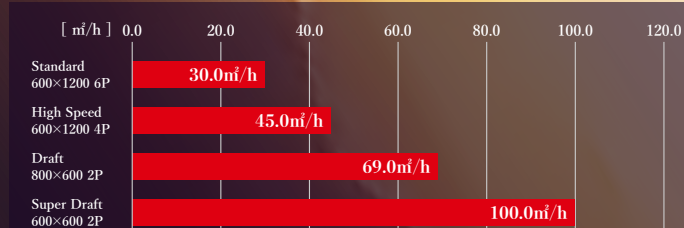
Inline sheet-fed cutting is possible. Possible to cut even after lamination by reading a dedicated cropmark to cut. Dramatically shortens works to greatly improve the efficiency of post-processing

# High productivity

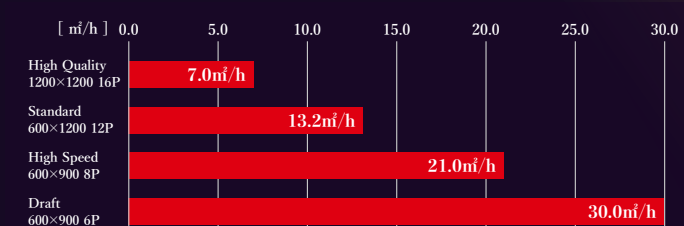
### 4C PVC



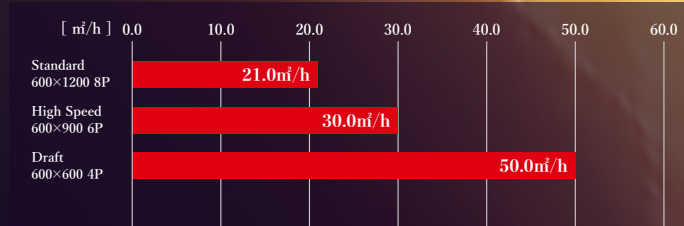
### 4C Tarpaulin



### 8C/6C PVC



### 8C/6C Tarpaulin



## Print & Cut

1,600mm width **CJV330-160** 1,300mm width **CJV330-130**



### Specifications

Item	JV330-130	JV330-160	CJV330-130	CJV330-160	
Print head	On-demand piezo head (2 staggered printheads)				
Print resolution	600 / 800 / 900 / 1200 dpi				
Head gap	3 levels by manual (2.0 mm / 2.5 mm / 3.0 mm)				
Ink	Type	SS21 / BS4			
	Color	SS21: C, M, Y, K, Lc, Lm, Lk, Or, W BS4: C, M, Y, K			
	Capacity	2L ink pack (SS21 White: 500 ml Ink pack only)			
Ink circulation	Circulation in damper MCTv2				
Max. Printable width	1,360 mm (53.5 in)	1,610 mm (63.4 in)	1,360 mm (53.5 in)	1,610 mm (63.4 in)	
Media	Max. Width	1,370 mm (53.9 in)	1,620 mm (63.8 in)	1,370 mm (53.9 in)	1,620 mm (63.8 in)
	Outer dia.	Φ250 mm or less			
	Max. Load capacity	Max.3 rolls (with the Media changer)			
	Weight	One roll: 45 kg (99.2 lb.) or less / Three rolls total: 90 kg (198.4 lb.) or less			
	Core dia.	2 / 3 inch			
Cut function	Cut speed / acceleration	—	—	Speed: Max. 300 mm/s Acceleration: Max. 0.5G	
	Cut pressure	—	—	10~450gf	
	Cutter response times	—	—	10 times /sec	
	Repetition accuracy	—	—	±0.2 mm (Excluding expansion and contraction of film due to temperature)	
Interface	Ethernet 1000 BASE-T (Recommended) / USB 2.0 Hi-speed				
Power	Main unit : Single phase AC100 - 120V±10% 12A AC200 - 240V±10% 6A 50/60 Hz ±1Hz x 2 pcs.				
Power consumption	Max. 1.440W or less x2 / Min. 4.5W or less (Sleep mode)				
Operational environment	Temperature : 20 - 30 degC (68 - 86 degF) Humidity : 35 - 65% Rh (Non condensing)				
	Guaranteed accuracy temperature : 20 - 25 degC (68 - 77 degF) Dust level : 0.15 mg/m3 or less (Equivalent to general office)				
Dimensions (WxDxH)	2,920 mm x 1,215 mm x 1,305 mm (115.0 x 47.8 x 51.4 in)	3,170 mm x 1,215 mm x 1,305 mm (124.8 x 47.8 x 51.4 in)	2,920 mm x 1,215 mm x 1,305 mm (115.0 x 47.8 x 51.4 in)	3,170 mm x 1,215 mm x 1,305 mm (124.8 x 47.8 x 51.4 in)	
Weight	358 kg (789.2 lb)	368 kg (811.3 lb)	363 kg (800.3 lb)	373 kg (822.3 lb)	

### Supplies

Item	Color	Item code	Remark
SS21 GREENGUARD Gold Certified ink	Cyan	SPC-0588C	2L ink pack
	Magenta	SPC-0588M	
	Yellow	SPC-0588Y	
	Black	SPC-0588K	
	Light Cyan	SPC-0588LC	
	Light Magenta	SPC-0588LM	
	Orange	SPC-0588OR	
	Light Black	SPC-0588LK	
BS4	White	SS21-W-50	500ml ink pack
	Cyan	BS4-C-2L	2L ink pack
	Magenta	BS4-M-2L	
	Yellow	BS4-Y-2L	
Black	BS4-K-2L		
MS Cleaning Cartridge		SPC-294	220ml ink cartridge
Cloth wiper kit		SPC-0905	

### XY slitter

Item	Note		
X slit	Cut width from media edge	Minimum cut width from media edge: 25 mm	Excluding impact of media skew
	Cut accuracy	Cut length 2 m: ±2 mm or below Cut length 30 m: ±5 mm or below	
Y slit	Cutting position	15 mm from the crop mark in the feed direction Cutting width: Data width + 5 mm on both ends	
	Cut accuracy	±2 mm or below	
Media set position	Right or Center reference		
Settable media width	Max. 1,620 mm		
Cuttable print data size	Maximum width	1,560 mm	
	Minimum	A4 vertical (210 mm x 297 mm)	
Minimum distance between data	X: 25 mm Y: 51 mm		

### Option

Item	Item code	Remark
X cutter unit	OPT-J0532	Additional X cutter

### Installation space

	JV330-130	CJV330-130	JV330-160	CJV330-160
Width	3,920 mm (154.3 in) or above		4,170 mm (164.2 in) or above	
Depth	4,050 mm (159.4 in) or above			

●Some examples shown in this catalog are artificial renderings. ●Specifications, designs and dimensions shown in this catalog may be subject to change without notice for technical improvements. ●The corporate and merchandise names in this catalog are the trademarks or registered trademarks of the respective corporations. ●Inkjet printers use extremely fine dots, so colors may vary slightly after replacement of print heads. ●Also note that when using multiple printer units, colors could vary slightly from one unit to another due to slight individual differences. ●Please note that descriptions and data in this catalog are as of February 2022.

**Mimaki** MIMAKI USA INC.  
mimakiUSA.com 150 Satellite Boulevard NE, Suite A, Suwanee, GA 30024  
TEL: (888) 404-2795

### Mimaki Global Network

USA	MIMAKI USA, INC.	Europe	MIMAKI EUROPE B.V.
Brazil	MIMAKI BRASIL COMERCIO E IMPORTACAO LTDA	Indonesia	PT. MIMAKI INDONESIA
India	MIMAKI INDIA PRIVATE LIMITED	Australia	MIMAKI AUSTRALIA PTY. LTD.
Taiwan	MIMAKI ENGINEERING (TAIWAN) CO.,LTD.	China	SHANGHAI MIMAKI TRADING CO.,LTD.
Singapore	MIMAKI SINGAPORE PTE. LTD.	Thailand	MIMAKI (THAILAND) CO.,LTD.

Give your creativity a Glow up

# B30 Series

JV330-160/130  
CJV330-160/130



As befit flagship models

# High quality × High productivity

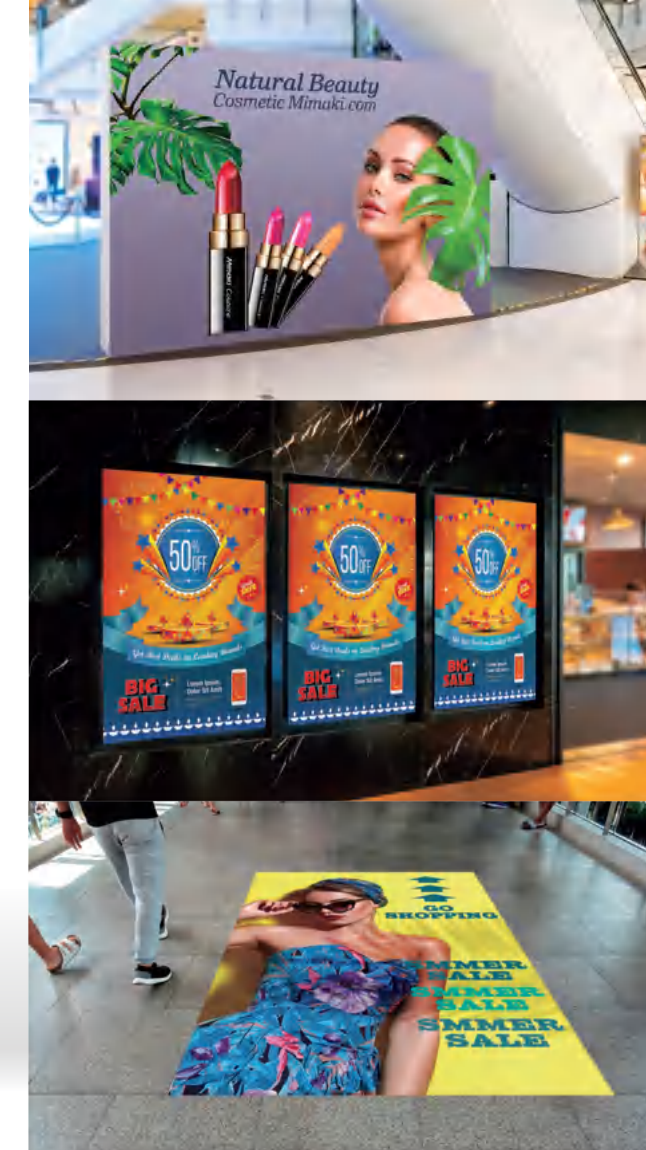
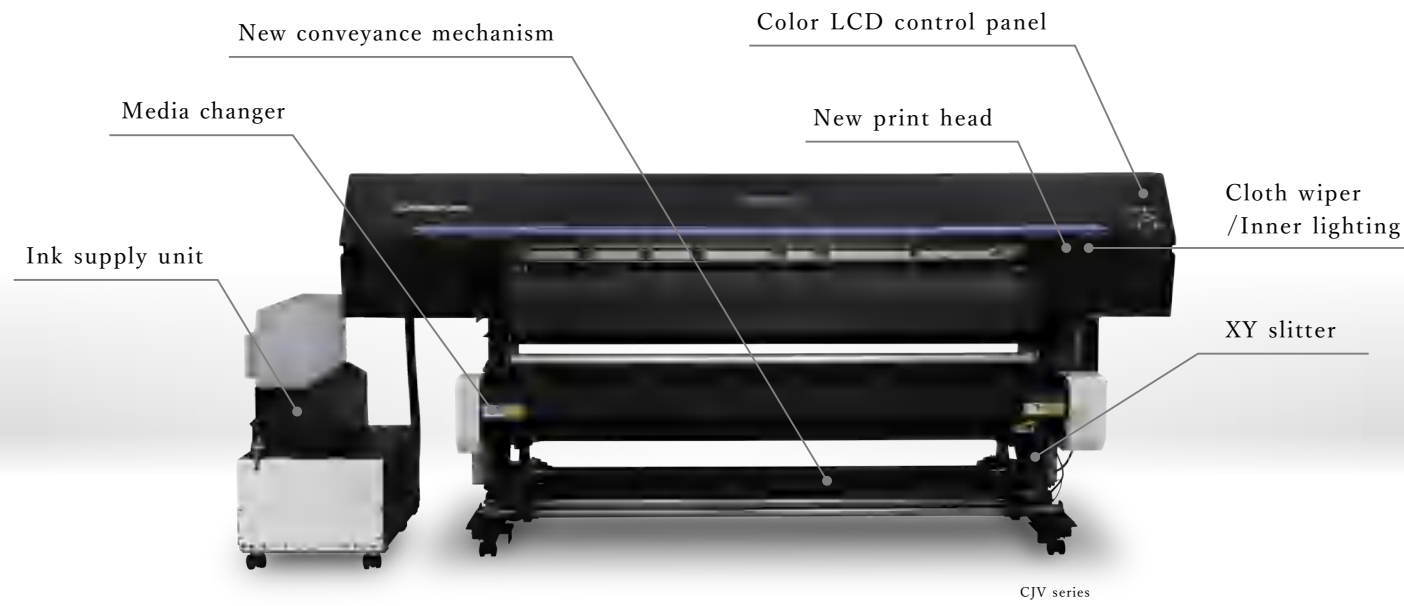
Fine-tuned expression of photo with a minimum 3pl ink dot  
New input profile Deep Color Natural for natural skin expression  
High productivity in standard mode  
(8 color ink set: 13.2 m<sup>2</sup>/h 4 color ink set: 21.0 m<sup>2</sup>/h)  
Vivid expression of solid color without any unevenness  
The quality of superb print images will ensure your firm business activities.



## Give your creativity a Glow up

High quality and high productivity with unimaginable added value and unparalleled ease of use...  
The 330 series of the new generation have been designed and developed from the ground up with a casing to pursue image quality and productivity befitting a flagship model and new values that assist in saving work.

### Flagship models of inkjet printer/Print & Cut product with a number of industry-first advanced design features



## High quality

### Drop Technology MWDT



Control of ink firing during printing for more accurate drop placement

By optimizing the firing order and combination of nozzles to minimize the effects of individual head differences and stagger adjustment on prints, it produces smooth photographic expressions and vivid deep colors.

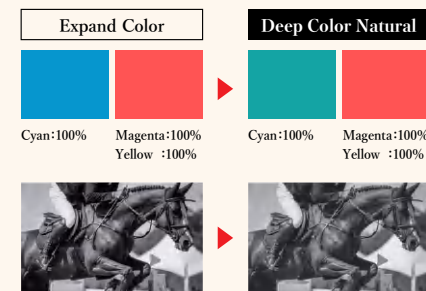
Vivid expression of deep color without any unevenness



### Input profile Deep Color Natural

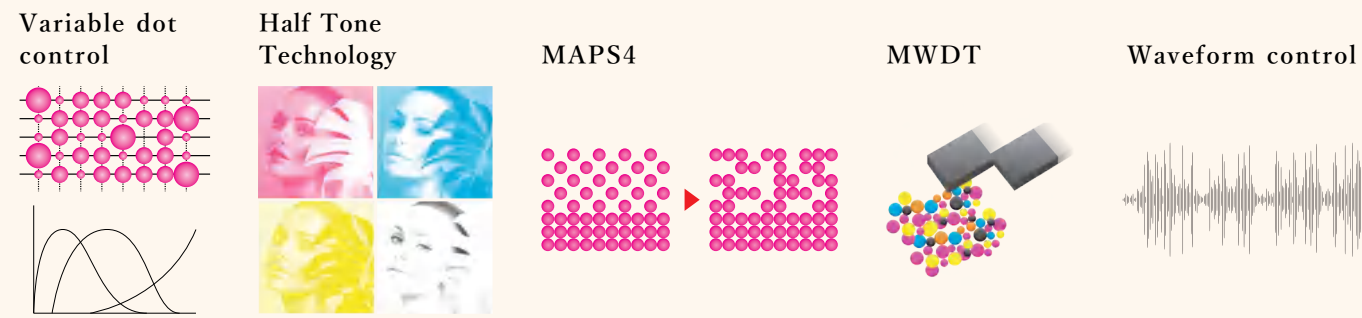
It is an easy-to-use input profile that pursues the expression of saturation and neutral gray, which are important for sign-making but difficult to achieve at the same time. It is possible to deliver well-fired cyan and deep red, natural and smooth skin tones and gray tones that are often required at sign application as color reproduction.

Point 1: Well-fired solid color  
Point 2: Deep red expression  
Point 3: Refined neutral gray



### Mimaki Imaging Technology

The five components of Mimaki's Imaging Technology for producing high quality print enables the smooth tone expression with suppression of graininess and the banding reduction.



### Technology to support stable operation

DAS (Dot Adjustment System)

The printer automatically adjusts and optimizes the dot position and feed volume, which affect print quality, as the media and printing conditions change.

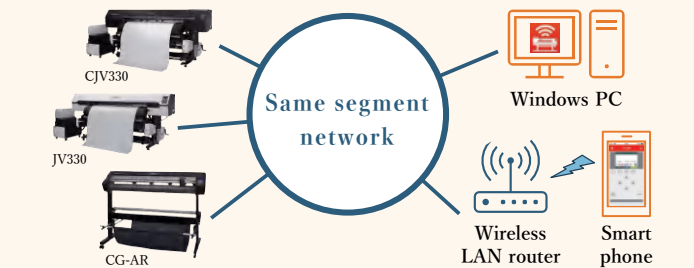
NCU (Nozzle Check Unit)  
NRS (Nozzle Recovery System)

The sensor automatically detects the condition of the nozzle and cleans it. If the nozzle is still loose, another nozzle is used and printing continues without slowing down.

### MRA (Mimaki Remote Access)

An application that allows remote monitoring of status and panel operation of machine

Ink types, heaters and notification alerts are listed to be able to remotely operate like an actual machine's panel



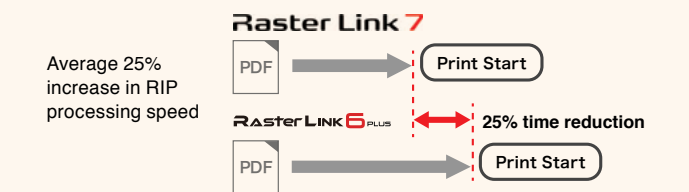
### Raster Link 7

Improves reproducibility of special effects (such as transparency) of PDF data

Reduces PDF data RIP processing time by an average of 25%

Prints out the variable data by the Variable print function

Enhanced favorite settings and pop-up log display



### Print & Cut

Eco-solvent inkjet printer of high image quality × high productivity with added cutting function

CJV330-130/160, perfect model for label, sticker, and car wrapping film making with just one model  
Design and idea you want can be created immediately.



CJV330-160/130

### Print

1,600mm width **JV330-160** 1,300mm width **JV330-130**

